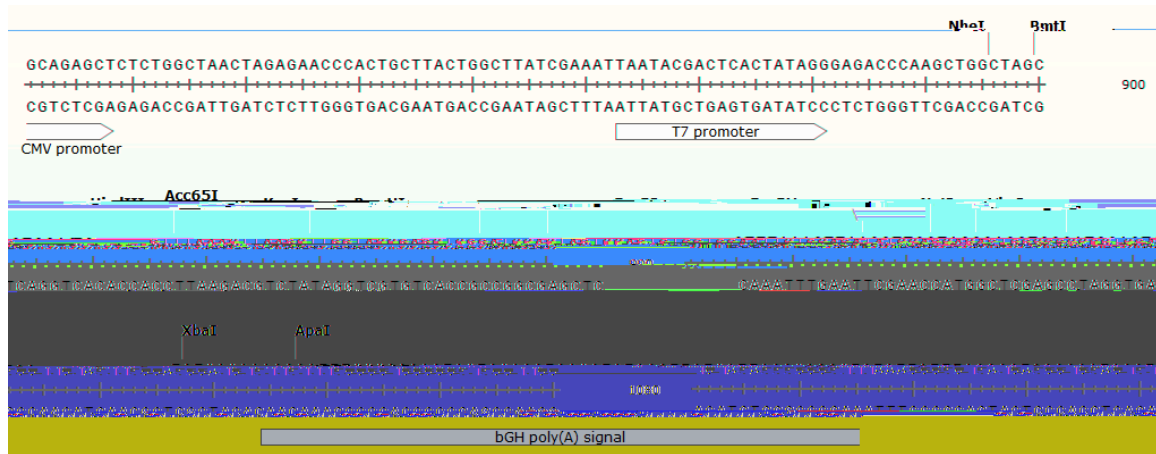


pCDNA3.1(+) Vector Information

MCS



LOCUS Exported 5428bp ds-DNA circular SYN 14-SEP-2017
DEFINITION pCDNA3.1(+).
ACCESSION .
VERSION .

/direction=RIGHT

/note="f1 ori"

/note="f1 bacteriophage origin of replication; arrow

of cAMP. "
rep_origin complement(3676..4261)
/direction=LEFT
/note="ori "
/note="high-copy-number Col E1/pMB1/pBR322/pUC origin of
replication"
CDS complement(4432..5292)
/codon_start=1
/gene="bla"

3841 TCTCCCTTCG GGAAGCGTGG CGCTTTCTCA TAGTCACGC TGTAGGTATC TCAGTTCGGT